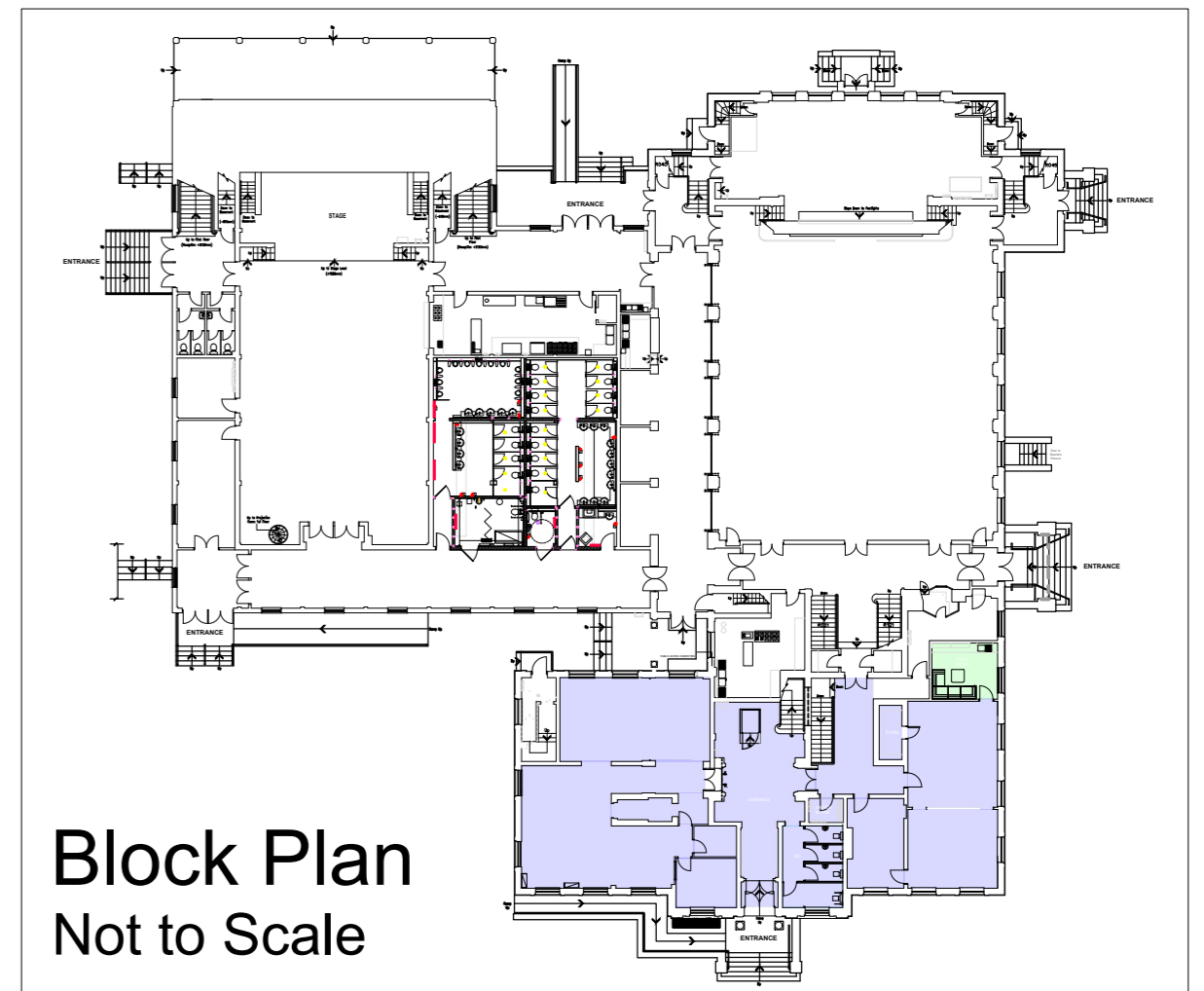


ENTRANCE

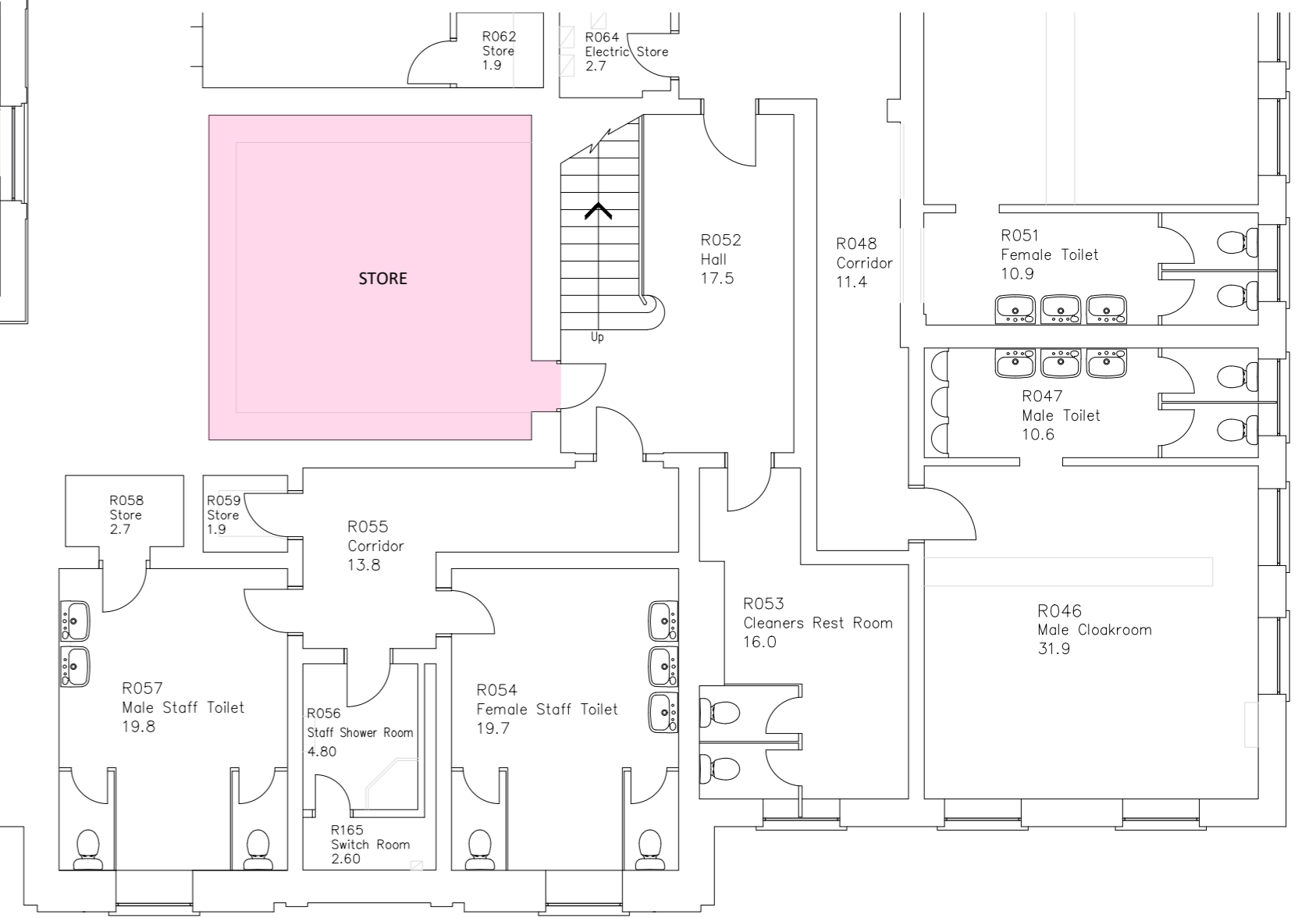


Block Plan
Not to Scale

Ground Floor Plan as proposed
Scale 1:100

KEY

- ADULT LIBRARY
(136M² excluding vestibule, entrance and corridor to childrens library)
- ANCILLARY ACCOMODATION
Reading room, meeting space (30M²)
- STAFFROOM
(15M²)
- CHILDRENS SECTION
(66M²)
- STORE
(35M²)
- TOILETS
(20M²)



Basement Floor Plan as proposed
Scale 1:100

Relocation of Services in Troon
Comment Sheet

RELOCATION OF SERVICES IN TROON LIBRARY TO THE MUNICIPAL BUILDING