

Your new recycling service

**Check
your new
collection
dates**

At-a-glance guide

Your new recycling service

Thank you for recycling your household waste. With your help, the recycling rate in South Ayrshire is growing and is now more than **55%**.

However, we need to do more to help meet Scotland's ambitious targets of recycling 70% of waste by 2025 and banning biodegradable waste – such as food waste, paper and card – from going to landfill from 2025.

This leaflet provides you with information about your service and how to use your bins.

In line with many other councils, our new way of working forms part of our commitment to the Scottish Household Recycling Charter, which is designed to introduce a consistent approach to recycling across Scotland.

Helping you to recycle more

Your recycling service is being improved thanks to money from the Scottish Government. The investment allows South Ayrshire Council to provide two new bins for householders to help increase the amount and quality of recycling collected,

while also reducing the amount of waste sent to landfill.

You can find details of your new collection dates from your collection calendar. These can also be downloaded from **south-ayrshire.gov.uk/bins-and-recycling**

Your collection service



Paper, Card and Cardboard
(Every four weeks)



Glass Bottles and Jars
(Every six weeks)



Metals, Plastics and Cartons
(Every four weeks)



Food Waste
(Every week)



Garden Waste
(Every four weeks)



Non-Recyclable Waste
(Every three weeks)

The type of bin you use will be dependent on the space available at your normal recycling collection point. Please check your calendar for information on your collection days. All waste should be contained inside the bin, with the lid closed.

Any excess waste should be taken to your local recycling centre (see p15) or phone us on **0300 123 0900** and we can arrange a visit to review the recycling needs for your property.

Paper, Card and Cardboard



Collected every four weeks

Yes

Paper – clean and dry

- ✓ Newspapers
- ✓ Magazines, catalogues and directories
- ✓ Junk mail and brochures
- ✓ Letters and envelopes
- ✓ Office and shredded paper
- ✓ Wrapping paper
- ✓ Paperback books (or can be donated to charity shops)

Cardboard – flattened

- ✓ Large and small cardboard boxes
- ✓ Brown corrugated packaging
- ✓ Toilet and kitchen roll tubes
- ✓ Greetings cards

No

- ✗ Plastic bags and liners
- ✗ Tissues and napkins
- ✗ Padded envelopes
- ✗ Kitchen towels
- ✗ Wallpaper

Top Tip!

Flattening items like boxes and packaging will free up more space, so you can get more in the bin.






1 Collect your recycling and flatten your cardboard.

2 Place flattened items into the new grey-lidded bin.



3 We will empty the communal grey-lidded bin from the area where it's stored every four weeks.

 Paper, card and cardboard can be recycled into new newspapers and packaging.

Glass Bottles and Jars



Collected every **six** weeks

Yes

- ✓ Food and drinks bottles and jars
- ✓ Condiment bottles and jars
- ✓ Toiletry, perfume and aftershave bottles

No

- ✗ Plastic bags and liners
- ✗ Crockery, ceramics and pyrex
- ✗ Windows and mirrors
- ✗ Drinking glasses
- ✗ Light bulbs
- ✗ Broken glass

Top Tip!
Remove lids from glass bottles and jars and put in the blue-lidded bin for recycling.




- 1 Rinse your glass bottles and jars with any lids removed.



- 2 Place your recycling into the new purple-lidded bin.



- 3 We will empty the communal purple-lidded bin from the area where it's stored every six weeks.

-  All your glass bottles and jars can be recycled into new glass bottles and jars.

Metals, Plastics and Cartons



Collected every **four** weeks

Yes

Metals – empty and rinsed

- ✓ Food and drinks cans
- ✓ Empty aerosols
- ✓ Foil trays
- ✓ Aluminium foil
- ✓ Chocolate and biscuit tins
- ✓ Metal lids

Plastics – rinsed and squashed

- ✓ Food and drink bottles
- ✓ Toiletry bottles
- ✓ Tablet and medicine bottles
- ✓ Cleaning products
- ✓ Pots, tubs and trays
- ✓ Lids and tops

Cartons – rinsed and squashed

- ✓ Soup cartons
- ✓ Juice cartons
- ✓ Other cartons

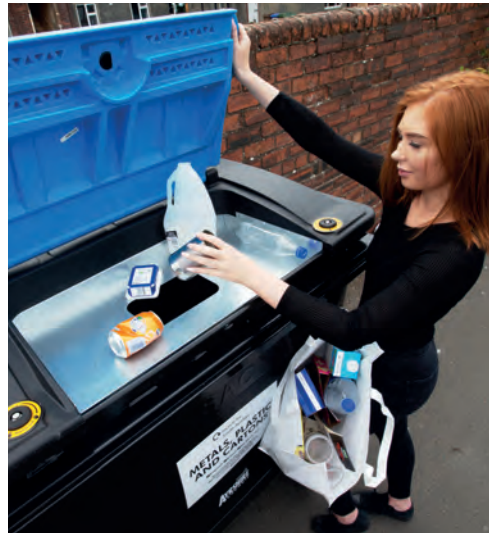
No

- ✗ Plastic bags and liners
- ✗ Crisp bags
- ✗ Biscuit wrappers
- ✗ Sweet wrappers
- ✗ Bubble wrap
- ✗ Polystyrene
- ✗ Plastic wrappers and netting
- ✗ Plastic cups and straws
- ✗ Pet food pouches
- ✗ Oil and paint cans
- ✗ Small and large electricals
- ✗ Batteries and wire
- ✗ Cutlery
- ✗ Gas bottles
- ✗ Metal pots, pans and trays

Top Tip!

Many items, such as pots and pans, can be taken to recycling centres (see p15).






1 Rinse your metals, and rinse and squash your plastics and cartons.

2 Place your recycling into the blue-lidded bin.



3 We will empty the communal blue-lidded bin from the area where it's stored every four weeks.

 Metals, plastics and cartons can be recycled into new plastic bottles, tins, cans and aerosols.

Food Waste

Collected **every week**



Yes

- ✓ Cooked and uncooked
- ✓ Dairy and eggshells
- ✓ Meat, fish and bones
- ✓ Fruit and vegetables (peelings too)
- ✓ Bread and cakes
- ✓ Rice, pasta and pizza
- ✓ Tea bags and coffee grounds
- ✓ Pet foods
- ✓ Out-of-date food (unpackaged)
- ✓ Windfall fruit from your garden

No

- ✗ Liquids
- ✗ Food packaging

Top Tip!
Remove packaging before recycling food.



Keeping your caddy clean


- ✓ You can empty your kitchen caddy as often as needed.
- ✓ Your caddy can be stored anywhere, including in a cupboard or outside.
- ✓ Avoid spillages by only filling the liner 3/4 full before tying.
- ✓ Give your caddy a quick rinse after emptying it and then replace the liner.

*Caddy liners can be bought from our customer service centres and libraries. Alternatively, you can use newspaper or plastic bags to line the caddy.

1 Put all cooked and uncooked food waste into a compostable liner inside your kitchen caddy.

2 When the liner is almost full, tie it off, remove it from the kitchen caddy and place it inside the communal food waste bin.

3 The communal food waste bin will be emptied every week.

 Your food waste is processed at a specialist plant where it's transformed into valuable resources like energy or fertiliser.



Garden Waste

Collected every four weeks (where applicable)
March to November and, by request, December to February
Phone **0300 123 0900** to request a winter collection



Yes

- ✓ Grass cuttings
- ✓ Leaves and bark
- ✓ Flowers
- ✓ Hedge trimmings and prunings
- ✓ Weeds
- ✓ Twigs & small branches (cut to fit)
- ✓ Cut flowers
- ✓ Pot plants and herbs (no pots)
- ✓ Sawdust

No

- ✗ Soil and turf*
- ✗ Stones
- ✗ Food packaging
- ✗ Garden furniture*
- ✗ Plastic bags
- ✗ Food waste**
- ✗ Pet waste

*Take to Recycling Centre

**Place in food caddy

Non-Recyclable Waste



Collected every **three** weeks

An average green bin in South Ayrshire contains a lot of waste that should be recycled.* Use your collection service to recycle as much as possible and we can avoid sending high quantities of valuable

resources to landfill where it breaks down to produce methane and other harmful gases.

Your green bin is only for waste that cannot be recycled using your recycling bins.

Yes

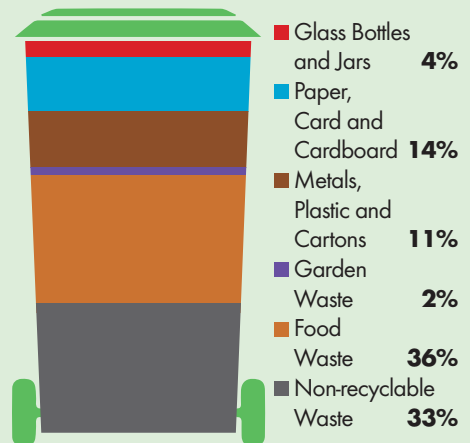
- ✓ Nappies
- ✓ Polystyrene
- ✓ Plastic bags and liners
- ✓ Pet food pouches
- ✓ Biscuit and crisp wrappers
- ✓ Sweet wrappers
- ✓ Toothpaste tubes
- ✓ Pet waste
- ✓ Packaging soiled with food
- ✓ Vacuum cleaner dust

No

- ✗ Any item that can be recycled using your recycling bins

Top Tip!
If you have large items, please take them to your local recycling centre or book a bulky uplift by phoning **0300 123 0900**.

*An average **green bin** contains:



South Ayrshire Council 2015 figures

Frequently asked questions...

Q: Will you collect extra waste left alongside the provided bins?

A: No. All waste should be contained inside the bin, with the lid closed. Excess waste can be taken to your local recycling centre.

Q: How do I carry my recycling to the communal bins?

A: We can provide you with a bag for life to take your recycling to the bins. For more information call **0300 123 0900**.

Q: How can I dispose of larger items?

A: Household waste can be disposed of free of charge at our recycling centres, but there is a charge for disposing of commercial and business waste.

You can also book a bulky uplift by phoning **0300 123 0900**.

Recycling Centres

South Ayrshire Council has **four** recycling centres:

- **Ayr** Recycling Centre,
Old Farm Road,
Heathfield, Ayr
KA8 9ST
- **Maybole** Recycling Centre,
Seaton Street,
Maybole
KA19 7BG
- **Girvan** Recycling Centre,
Old Street,
Girvan
KA26 9HG
- **Troon** Recycling Centre,
Port Ranald Drive,
Troon
KA10 6DJ

These items can all be **recycled*** at our centres:

- All electronic and electrical equipment inc. strip lights
- Batteries
- Books/tapes/CDs/videos
- Car batteries/engine oil
- Cardboard
- Drinks cans/food tins
- Gas cylinders (empty)
- Glass bottles/jars
- Newspapers/magazines
- Scrap metal
- Soil/rubble
- Textiles/shoes
- Wood waste

Please search for recycling centres on the South Ayrshire Council website for information on the

opening times for your recycling centre and for further information on smaller recycling points.

* Excess non-recyclable waste can also be left at centres.

This information can be made available, on request, in braille, large print or audio formats and can be translated into a range of languages. Contact details are provided below.

درخواست کرنے پر یہ معلومات نابینا افراد کے لئے اُبھرے حروف، بڑے حروف یا آڈیو میں مہیا کی جاسکتی ہے اور اسکا مختلف زبانوں میں ترجمہ بھی کیا جاسکتا ہے۔ رابطہ کی تفصیلات نیچے فراہم کی گئی ہیں۔

本信息可应要求提供盲文，大字印刷或音频格式，以及可翻译成多种语言。以下是详细联系方式。

本信息可應要求提供盲文，大字印刷或音頻格式，以及可翻譯成多種語言。以下是詳細聯繫方式。

ਇਹ ਜਾਣਕਾਰੀ ਮੰਗ ਕੇ ਬੋਲ, ਵੱਡੇ ਅੱਖਰਾਂ ਅਤੇ ਸਣਨ ਵਾਲੇ ਰਪ ਢਚ ਵੀ ਲਈ ਜਾ ਸਕਦੀ ਹੈ, ਅਤੇ ਇਹਦਾ ਤਰਜਮਾ ਹੋਰ ਬੋਲੀਆਂ ਢਚ ਵੀ ਕਰਵਾਇਆ ਜਾ ਸਕਦਾ ਹੈ। ਸੰਪਰਕ ਕਰਨ ਲਈ ਜਾਣਕਾਰੀ ਹੇਠਾਂ ਵੱਲੀ ਗਈ ਹੈ।

Ninieszcze informacje mogą zostać udostępnione na życzenie w alfabecie Braille'a, w druku powiększonym lub w formacie audio oraz mogą zostać przetłumaczone na wiele języków obcych. Dane kontaktowe znajdują się poniżej.

Faodar am fiosrachadh seo fhaighinn, le iarrtas, ann am braille, clò mòr no clàr fuaim agus tha e comasach eadar-theangachadh gu grunn chànanan. Tha fiosrachadh gu h-ìosal mu bhith a' cur fios a-steach.

For more information:

South Ayrshire Council,
Walker Road Operating Centre,
Ayr, KA8 9LE

0300 123 0900

**south-ayrshire.gov.uk/bins-and-recycling
customerservices@south-ayrshire.gov.uk**

SAC21858

