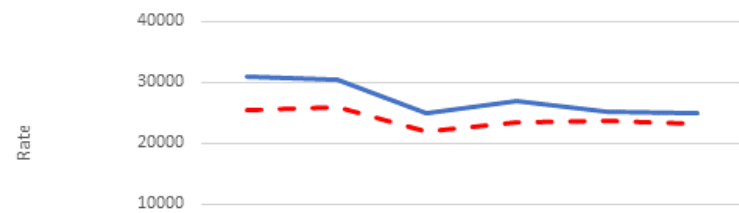


POPULATION HEALTH

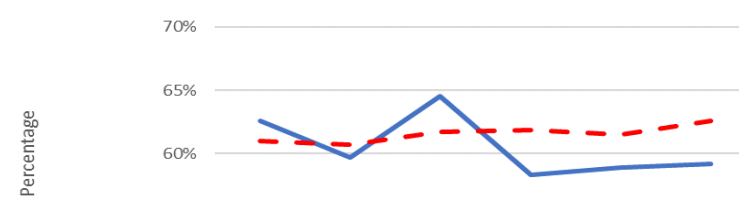
AGEING WELL

Emergency Admissions over 65s (per 100,000 pop)



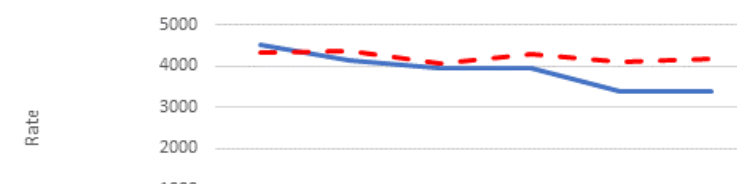
	2018/19	2019/20	2020/21	2021/22	2022/23	2023/24
South Ayrshire	30803	30417	24908	26885	25209	24798
Scotland	25402	25875	21794	23443	23742	23113

Percentage of people aged 65+ with high levels of care needs who are cared for at home



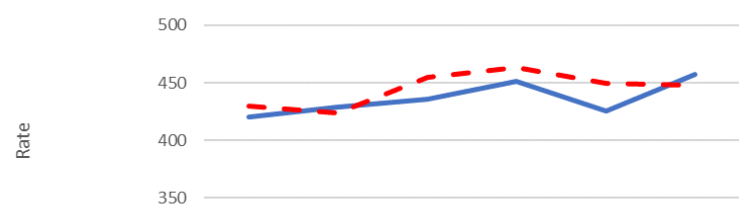
	2018/19	2019/20	2020/21	2021/22	2022/23	2023/24
South Ayrshire	62.6%	59.7%	64.5%	58.3%	58.9%	59.2%
Scotland	61.0%	60.7%	61.7%	61.9%	61.5%	62.6%

Emergency Admissions due to an unintentional injury Over 75s (per 100,000 pop)



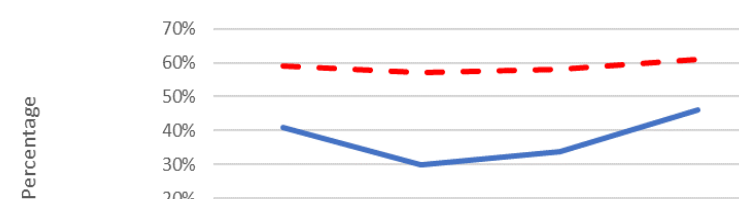
	2018/19	2019/20	2020/21	2021/22	2022/23	2023/24
South Ayrshire	4500.9	4149.3	3965.6	3950.5	3364.8	3379.1
Scotland	4308.8	4369.2	4074.7	4293.2	4113.4	4173.8

Mortality rates for people over 75s (per 100,000 pop)



	2018/19	2019/20	2020/21	2021/22	2022/23	2023/24
South Ayrshire	420	429	436	451	426	458
Scotland	430	424	455	463	449	448

Neighbourhood Strength : There are places where people can meet up and socialise



	2018	2019	2022	2023
South Ayrshire	41%	30%	34%	46%
Scotland	59%	57%	58%	61%

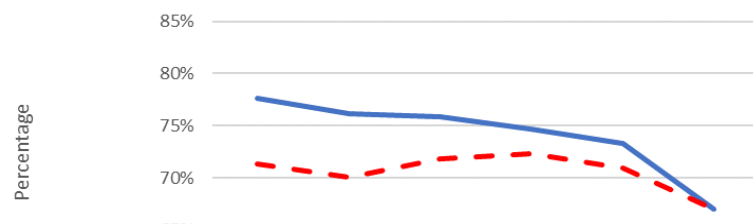
Neighbourhood Strength : There are welcoming places and opportunities to meet new people



	2018	2019	2022	2023
South Ayrshire	42%	29%	34%	38%
Scotland	52%	52%	52%	56%

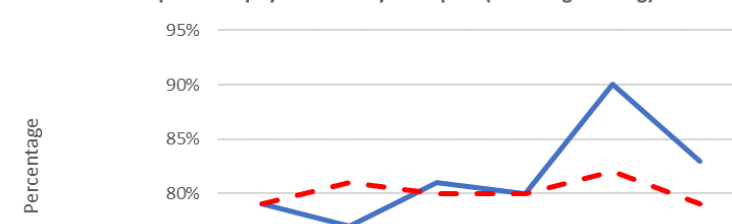
GREEN HEALTH ACTIVE LIVING / PHYSICAL ACTIVITY AND SPORT

Percentage of adults satisfied with leisure facilities



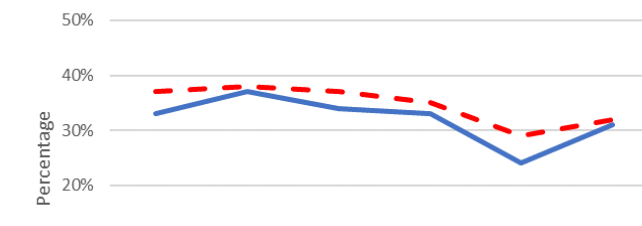
	2018/19	2019/20	2020/21	2021/22	2022/23	2023/24
South Ayrshire	77.6%	76.2%	75.9%	74.7%	73.3%	67.0%
Scotland	71.4%	70.1%	71.8%	72.3%	71.0%	67.0%

Participation in physical activity and sport (including walking)



	2016	2017	2018	2019	2022	2023
South Ayrshire	79%	77%	81%	80%	90%	83%
Scotland	79%	81%	80%	80%	82%	79%

Use of local authority sport and leisure facilities in last year



	2016	2017	2018	2019	2022	2023
South Ayrshire	33%	37%	34%	33%	24%	31%
Scotland	37%	38%	37%	35%	29%	32%